

In certain cases, some of these criteria may be varied, and sometimes other considerations apply. The decision as to whether the Cochlear Implant is the device of choice is made on a case-by-case basis. A person's own thoughts and views are very important.

WHAT IF THE COCHLEAR IMPLANT IS NOT APPROPRIATE AT PRESENT?

We can work in conjunction with hearing aid providers to recommend alternatives that may be of assistance.

With time, hearing may deteriorate and a Cochlear Implant may become the treatment of choice at a later date. We can monitor hearing to determine when a Cochlear Implant may be appropriate.

HOW TO REFER

For initial evaluation it is necessary to obtain a referral from a General Practitioner to;

Dr. Paul Varley or Dr. Robert Morrissey

AT

South Australian
Cochlear Implant Centre

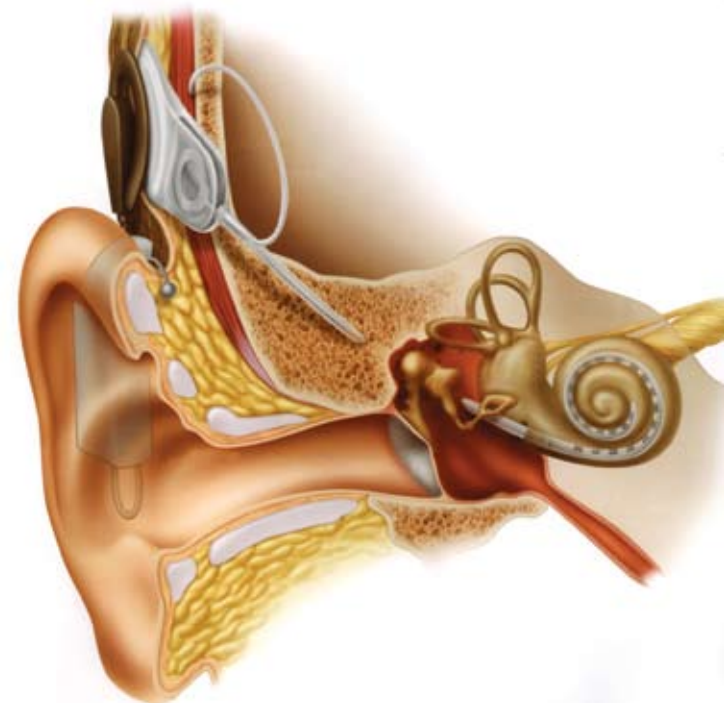
Level 1
251 Morphett Street
Adelaide SA 5000

Phone: (08) 8203 8363
Fax: (08) 8203 8353
TTY: (08) 8410 9955
E-mail: sacic@bigpond.net.au

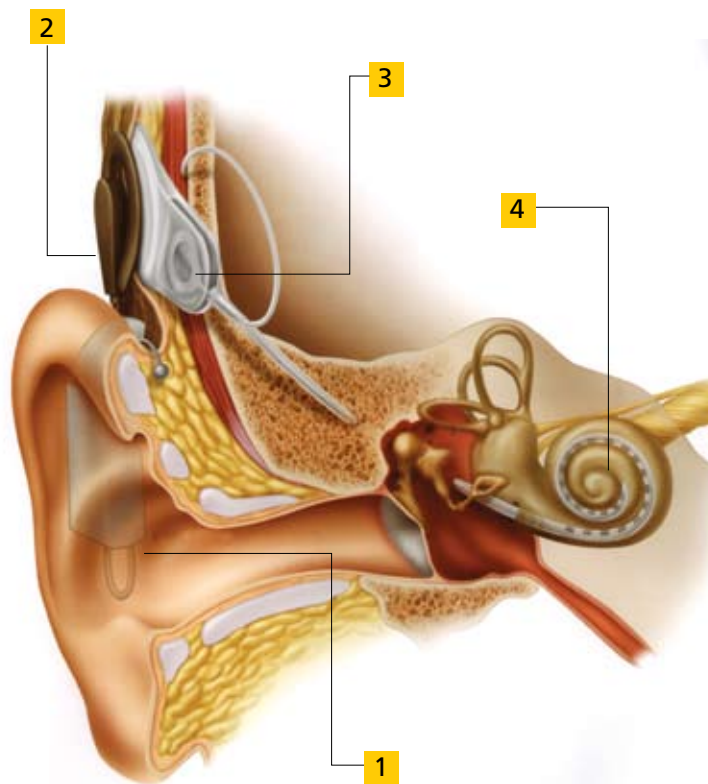
**IF YOU HAVE ANY QUESTIONS
OR REQUIRE FURTHER INFORMATION
DO NOT HESITATE TO CONTACT US**



SOUTH AUSTRALIAN COCHLEAR IMPLANT CENTRE



1. Speech Processor
2. Transmitter Coil
3. Receiver/Stimulator
4. Electrode Array



The Internal Components:

- a. The receiver/stimulator converts the signals from the transmitter back into electrical signals
- b. These electrical signals are sent to an electrode array which lies inside the cochlea (the inner ear) and these stimulate the hearing nerve
- c. The nerve impulses travel to the brain and are recognized as sounds

WHO IS ELIGIBLE TO RECEIVE A COCHLEAR IMPLANT?

A number of medical and audiological assessments are required to determine if a Cochlear Implant is the treatment of choice. The results of these tests allow the Clinicians to advise people on the benefit they may gain from the device.

Generally, the following criteria apply:

- The potential recipient must have a severe to profound sensori-neural hearing loss in both ears.
- They must gain little or no benefit from the use of hearing aids.
- They need to have developed verbal communication skills.
- The ears must be free from infection.
- The inner ear must be reasonably well-formed.
- They must be medically suitable to undergo surgery.
- They and their family must have realistic expectations of the implant.
- They need to be aware of the impact of the device on themselves and their family.

The External Components:

- a. Sound is picked up by a microphone and sent to the speech processor
- b. The speech processor converts the sound information into electrical signals
- c. These signals are sent to a transmitter coil located behind the ear which is held in place by a magnet
- d. The transmitter coil converts the electrical signals to a signal which can be sent to a receiver/stimulator device implanted under the skin behind the ear

The external device (i.e. the speech processor and head set) may be worn or taken off as required

WHO WE ARE AND WHAT WE DO?

We are a private adult Cochlear Implant Centre. We provide a full range of services for people who require or have a Cochlear Implant. These include preoperative medical and audiological evaluation, surgical implantation and postoperative rehabilitation and maintenance.

Team Structure

Ear Nose and Throat Surgeons

Dr. Robert Morrissey
Dr. Paul Varley

Audiologists

Keith Chiveralls
Nina Swiderski
Scott Eckert
Nicole Grimm

Administrative Officer

Christie Schopp

WHAT IS A COCHLEAR IMPLANT?

A Cochlear Implant is an electrical device which helps people with severe to profound sensori-neural (inner ear) hearing loss. It is designed to produce a sensation of hearing by direct, electrical stimulation of the nerves in the inner ear.

HOW DOES A COCHLEAR IMPLANT WORK?

The device consists of an external part which looks like a behind-the-ear hearing aid and an internal part which is implanted under the skin.