

Cochlear™

Nucleus®

# Accessories Supplement

to the Cochlear™ Nucleus® CP910 and  
CP920 Sound Processor User Guide

*Hear now. And always*



# About

This supplement describes how to use the accessories available for your Cochlear™ Nucleus® CP910 or CP920 (“CP900 Series”) Sound Processor. You can order audio accessories from Cochlear or talk to your clinician.

## NOTE

Please also refer to your *Important Information* document for essential advice that applies to Cochlear implant systems.



## NOTE

For details on using the range of Wireless Accessories, see the *Cochlear Wireless Accessories User Guide*.



## Symbols used in this guide



### Overview

This is how the accessory fits together with your processor.



### Ready to use

The finished configuration of the accessory.



### Tip

Time saving hint.



### Warning (harmful)

Potential safety hazards and serious adverse reactions.  
Could cause harm to person.

# Contents

<b>LiteWear</b> .....	3
LiteWear cable, case, and fixing aids .....	4
Mic Lock-Stirrup (for LiteWear) .....	8
<b>Audio</b> .....	13
Personal audio cable .....	14
Bilateral personal audio cable .....	16
Mains isolation cable .....	20
Monitor earphones .....	22
Lapel microphone .....	24
Portable phone cable .....	26
<b>Adaptors</b> .....	29
Euro accessory adaptor .....	30
Freedom accessory adaptor .....	32
<b>Extras</b> .....	35
Battery holder O-ring .....	36
<b>Warnings</b> .....	39
<b>Other information</b> .....	40





# LiteWear

---

LiteWear cable, case, and fixing aids	4
Mic Lock-Stirrup (for LiteWear)	8

# LiteWear cable, case, and fixing aids

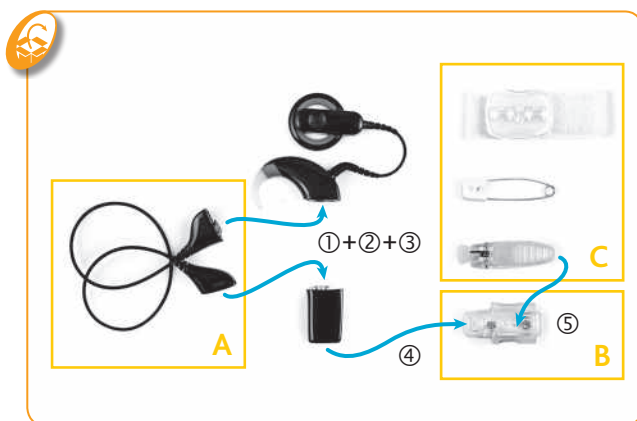
The Cochlear™ Nucleus® CP900 Series LiteWear Cable allows any standard (not compact) battery module to be worn on the body – so only the processing unit is worn on the ear.

LiteWear is made up of a LiteWear cable (A), a LiteWear case (B) and a choice of LiteWear fixing aids (C).

Use a Mic Lock-Stirrup to help hold a processor with a LiteWear cable securely on the ear. See *Mic Lock-Stirrup (for LiteWear)* on page 8.

## Overview

This is how the accessories fit together with your processor.



## Instructions

1



2



3



4



Attach the fixing aid appropriate to your needs (\*the others are shown below).

It should snap firmly into place.

5\*



Ready to use



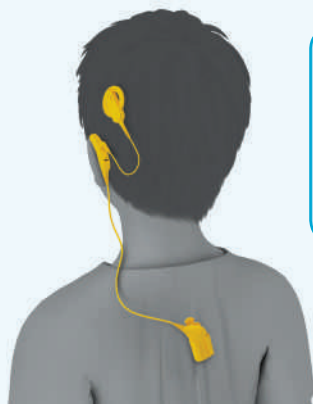


5\*



\*The other fixing aids attach to the case in the same way.

5\*



#### TIP

To help prevent tampering, attach the LiteWear case between the shoulder blades of very young children.



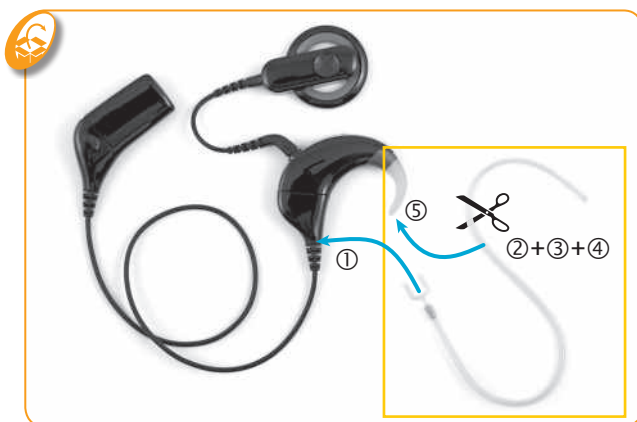
LITEWEAR

# Mic Lock-Stirrup (for LiteWear)

Use a Cochlear™ Nucleus® Mic Lock-Stirrup to hold a processor with a LiteWear cable securely on the ear.

## Overview

This is how the accessory fits together with your processor.



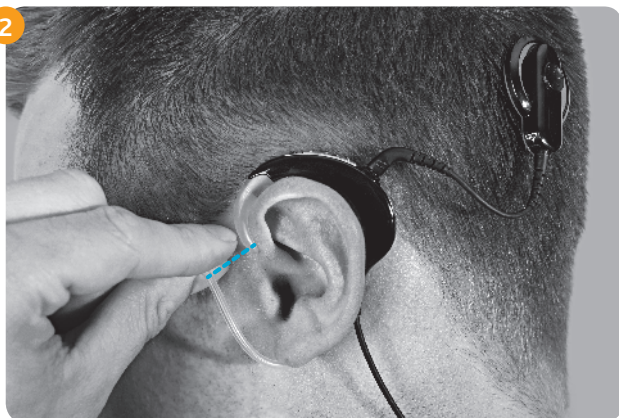
## Instructions

The stirrup snaps into two dimples at the base of the LiteWear cable.





2



Find the right length of tubing to hold the processor firmly in place.

3



LITEWEAR

4



5



Ready to use





When correctly fitted, Mic Lock-Stirrup fits snugly around the ear to hold the processor in place.



LITEWEAR

---

*Plug-in audio accessories turn on automatically when you plug them into your processor. You can turn them off and on again with the buttons on your processor or with your remote (see your processor or remote user guide if you don't know how to do this).*

*Plug-in audio accessories cannot be connected to a CP920 sound processor as it does not have an accessory socket.*

*(For details on using the range of Wireless Accessories, see the Cochlear Wireless Accessories User Guide.)*

# Audio

---

Personal audio cable	14
Bilateral personal audio cable	16
Mains isolation cable	20
Monitor earphones	22
Lapel microphone	24
Portable phone cable	26

# Personal audio cable

Use a Cochlear™ Nucleus® Personal Audio Cable to connect a battery-powered audio device (e.g. portable music player) to your CP910 sound processor.

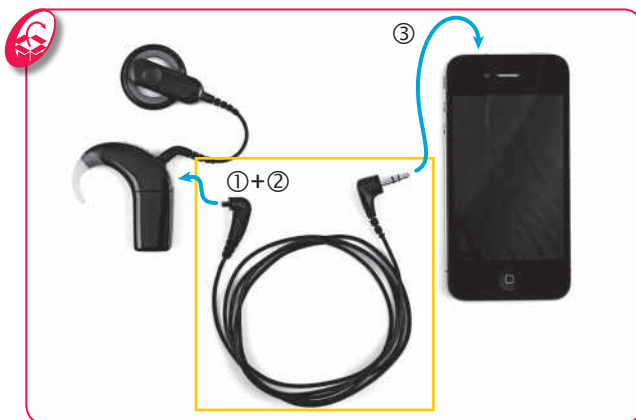


## WARNING

For electrical safety reasons, always use a mains isolation cable when connecting a personal audio cable to a mains-powered audio device or to a battery-powered device connected to mains power for charging. See *Mains isolation cable* on page 20.

## Overview

This is how the accessory fits together with your processor.



## Instructions

1





2



3



Ready to use



AUDIO

# Bilateral personal audio cable

Use a Cochlear™ Nucleus® Bilateral Personal Audio Cable to connect a battery-powered audio device (e.g. portable music player) to your CP910 sound processors.

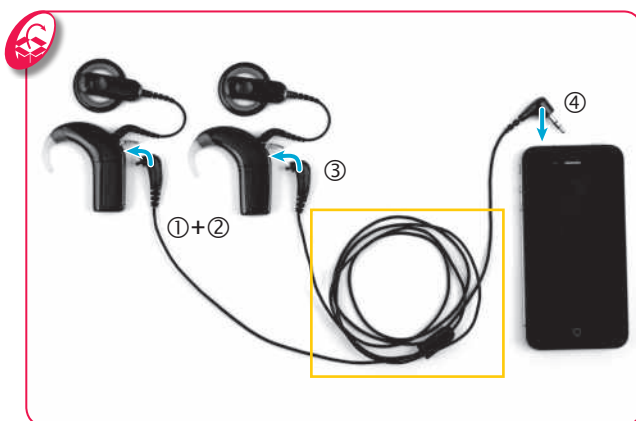


## WARNING

For electrical safety reasons, always use a mains isolation cable when connecting a personal audio cable to a mains-powered audio device or to a battery-powered device connected to mains power for charging. See *Mains isolation cable* on page 20.

## Overview

This is how the accessory fits together with your processor.



For stereo, connect the short side of the cable to the left processor and the long side to the right processor.



1



2



3



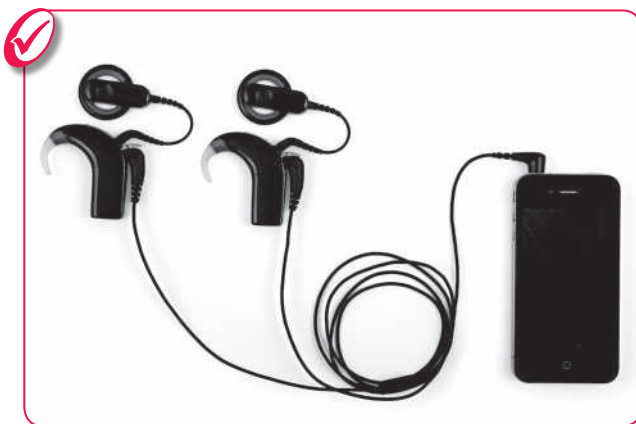
## Instructions



AUDIO



Ready to use



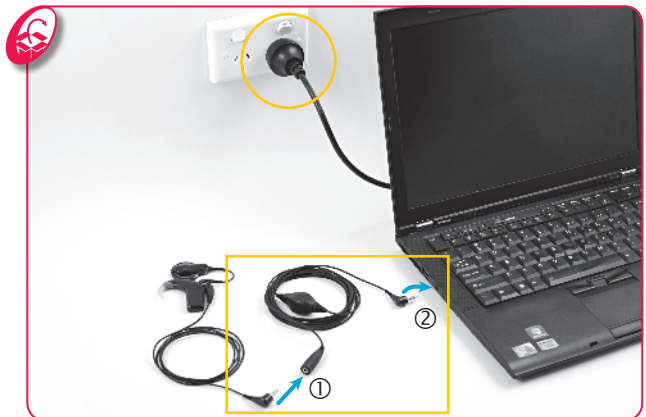


# Mains isolation cable

For electrical safety reasons, always use a Cochlear™ Nucleus® Mains Isolation Cable when connecting a personal audio cable (or bilateral personal audio cable) to any mains-powered audio device (e.g. computer, television) or to battery-powered device connected to mains power for charging.

## Overview

This is how the accessory fits together with your processor.



## Instructions

1



2



Ready to use



Connect a bilateral personal audio cable to the mains isolation cable in the same way.



AUDIO

# Monitor earphones

Use Cochlear™ Nucleus® Monitor Earphones to check if a CP910 sound processor is working (e.g. to check the processor of a recipient in your care).

## Overview

This is how the accessory fits together with your processor.



## Instructions

1

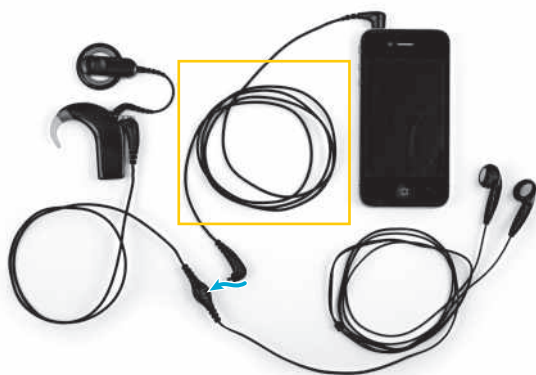




2



Ready to use



To check if an audio accessory (e.g. a personal audio cable) is working, attach it to the socket in the middle of the monitor earphones cable.



AUDIO

# Lapel microphone

To make conversations easier in noisy places, attach a Cochlear™ Nucleus® Lapel Microphone to your CP910 sound processor.

## Overview

This is how the accessory fits together with your processor.



## Instructions



2



Ready to use



AUDIO

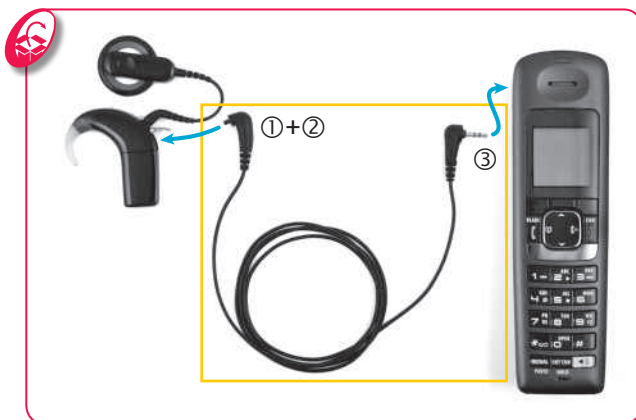
# Portable phone cable

Use a Cochlear™ Nucleus® Portable Phone Cable to connect a portable phone (with a 2.5 mm audio socket) to your CP910 sound processor.

If your phone has a 3.5mm audio socket, use a personal audio cable instead. See *Personal audio cable* on page 14.

## Overview

This is how the accessory fits together with your processor.



## Instructions





2



3



Ready to use

---

*Plug-in audio accessories turn on automatically when you plug them into your processor via an adaptor. You can turn them off and on again with the buttons on your processor or with your remote (see your processor or remote user guide if you don't know how to do this).*

*Plug-in audio accessories cannot be connected to the CP920 sound processor as it does not have an accessory socket.*

*(For details on using the range of Wireless Accessories, see the Cochlear Wireless Accessories User Guide.)*

# Adaptors

---

Euro accessory adaptor	30
Freedom accessory adaptor	32

# Euro accessory adaptor

Use the Cochlear™ Nucleus® Euro Accessory Adaptor to connect a device with a three-pin Euro plug to your CP910 sound processor.

Do not connect Cochlear™ Baha® accessories to your CP910 sound processor.

## Overview

This is how the accessory fits together with your processor.



## Instructions

1





2



3



Ready to use

# Freedom accessory adaptor

Use the Cochlear™ Nucleus® Freedom™ Accessory Adaptor to connect FM cables to your CP910 sound processor.

The adaptor creates a more comfortable angle between your processor and the straight plug on the FM cables.



## Overview

This is how the accessory fits together with your processor.



## Instructions

1



2



3



Ready to use





# Extras

---

Battery holder O-ring 36

# Battery holder O-ring

Replace your Cochlear™ Nucleus® Battery Holder O-Ring when it becomes worn or damaged.

Do not use tweezers or other sharp objects to remove the old O-ring.



## WARNING

O-rings are a potential choking hazard. Keep away from children.

## Overview

This is how the accessory fits together with your processor.



## Instructions

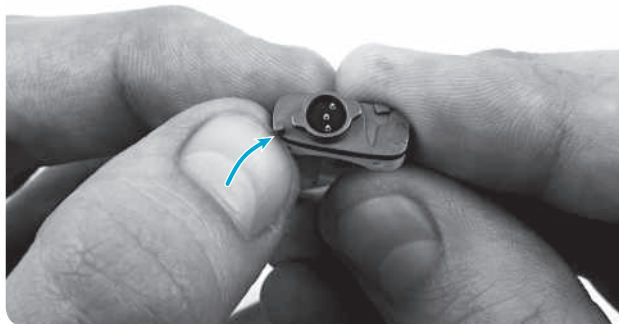
1



2

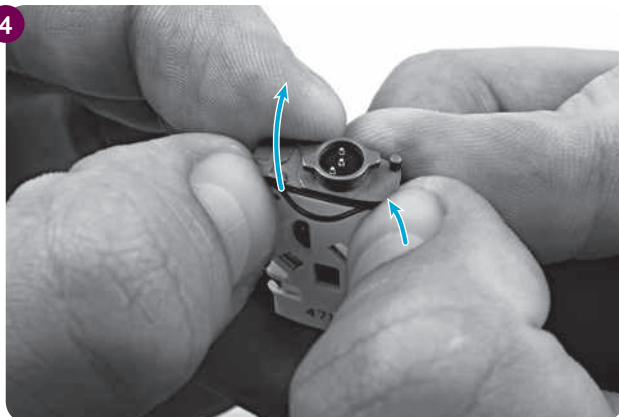


3



Carefully remove the old O-ring with your fingers. Start by pinching the O-ring with your thumb nail.

4

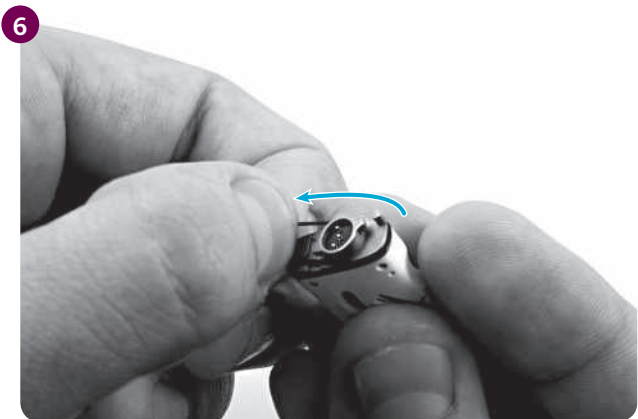
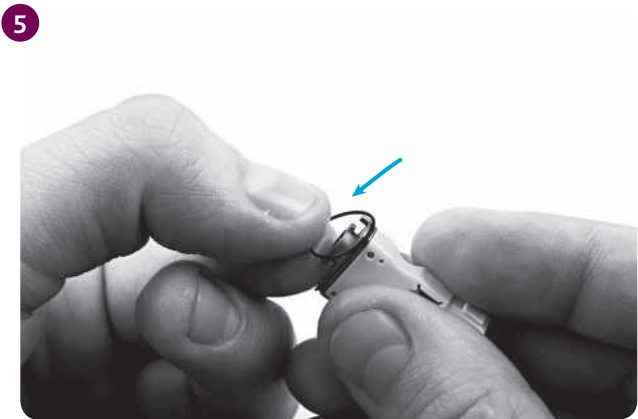


Then, pushing with your other thumb nail, create a loop in the O-ring, and ease the O-ring off.



EXTRAS

Attach a new O-ring, starting at one end of the battery holder.



Ready to use





# Warnings

- Do not use excessive force, twist or pull on accessories when connecting them to the processor or at any time while they are connected.
- No modification of this equipment is allowed.
- Removable parts (e.g. Euro accessory adaptor) can be lost or may be a choking hazard.
- Remove the monitor earphones immediately if the sound level is uncomfortably loud and inform your clinician.
- Do not place the device or accessories inside any part of your body (e.g. nose, mouth).
- Parents and carers are advised that unsupervised use of long cables (e.g. LiteWear cables or personal audio cables) may present a risk of strangulation.
- Do not let your processor or accessories entangle with any jewellery (e.g. earhook and earrings) or machinery.
- Do not attach or wear a body-worn battery configuration beneath layers of clothing in direct contact with the skin (e.g. in pocket or under a child's vest).
- Make sure all cables used by a child are securely attached to their clothing.
- Do not place the accessories in any household devices (e.g. microwave oven, dryer).

# Other information

## Materials

- LiteWear cable is made of polyester, thermoplastic elastomer (TPE) & polyvinyl chloride (PVC) sheath is PVC; plugs/strain relief are polypropylene (PP) and TPE.
- LiteWear connection shoes are made of copolyester.
- LiteWear retention case is made of polyamide.
- LiteWear fixing aids are made of polycarbonate.

## Equipment classification

Your sound processor accessories which require electricity to function are accessories to a medical device as described in the international standard IEC 60601-1:2005, Medical Electrical Equipment – Part 1: General Requirements for Basic Safety and Essential Performance.

## Certification

The following sound processor accessories fulfil the essential requirements listed in Annex I of the EC directive 93/42/EEC on Medical Devices as per the conformity assessment procedure in Annex VII:



- Nucleus Mic Lock and Nucleus Mic Lock Stirrup
- Nucleus Litewear Cable and Nucleus Bilateral Personal Audio Cable
- Nucleus Monitor Earphones and Nucleus Lapel Microphone
- Nucleus Portable Phone Cable and Nucleus Euro Accessory Adaptor
- Freedom Accessory Adaptor

The following sound processor accessories are not considered as medical devices:

- Nucleus Litewear Fixing Aids and Nucleus Litewear Cable
- Nucleus Battery Holder O Ring

## Labelling symbols

The following symbols may appear on your processor or remote or accessory components and/or packaging:



Refer to instruction manual



Specific warnings or precautions associated with the device, which are not otherwise found on the label



Manufacturer



Authorised representative in the European Community



Catalogue number



Serial number



Batch code



Date of manufacture



Temperature limits



Humidity Limitation



CE registration mark. Indicates compliance with the requirements of the Medical Device Directive 93/42/EEC



Do not re-use

**Rx Only**

By prescription



Recyclable material



Dispose of electrical components in accordance with your local regulations



Dispose of lithium-ion batteries in accordance with your local regulations

## Legal statement

The statements made in this guide are believed to be true and correct as of the date of publication. However, specifications are subject to change without notice.

© Cochlear Limited 2015

# Notes



# Cochlear™



**Cochlear Ltd** (ABN 96 002 618 073) 1 University Avenue, Macquarie University, NSW 2109, Australia  
Tel: +61 2 9428 6555 Fax: +61 2 9428 6352

**Cochlear Ltd** (ABN 96 002 618 073) 14 Mars Road, Lane Cove, NSW 2066, Australia  
Tel: +61 2 9428 6555 Fax: +61 2 9428 6352

**Cochlear Americas** 13059 E Peakview Avenue, Centennial, CO 80111, USA  
Tel: +1 303 790 9010 Fax: +1 303 792 9025

**Cochlear Canada Inc** 2500-120 Adelaide Street West, Toronto, ON M5H 1T1, Canada  
Tel: +1 416 972 5082 Fax: +1 416 972 5083

**Cochlear AG** EMEA Headquarters, Peter Merian-Weg 4, 4052 Basel, Switzerland  
Tel: +41 61 205 8204 Fax: +41 61 205 8205

**EC REP Cochlear Deutschland GmbH & Co. KG** Karl-Wiechert-Allee 76A, 30625 Hannover, Germany  
Tel: +49 511 542 770 Fax: +49 511 542 7770

**Cochlear Europe Ltd** 6 Dashwood Lang Road, Bourne Business Park, Addlestone, Surrey KT15 2HJ, United Kingdom  
Tel: +44 1932 26 3400 Fax: +44 1932 26 3426

**Cochlear Benelux NV** Schaliënhoedreef 20 i, B-2800 Mechelen, Belgium  
Tel: +32 15 79 55 11 Fax: +32 15 79 55 70

**Cochlear France S.A.S.** 135 Route de Saint-Simon, 31100 Toulouse, France  
Tel: +33 5 34 63 85 85 (International) or 0805 200 016 (National) Fax: +33 5 34 63 85 80

**Cochlear Italia S.r.l.** Via Larga 33, 40138 Bologna, Italy  
Tel: +39 051 601 53 11 Fax: +39 051 39 20 62

**Cochlear Nordic AB** Konstruktionsvägen 14, 435 33 Mölnlycke, Sweden  
Tel: +46 31 335 14 61 Fax: +46 31 335 14 60

**Cochlear Tıbbi Cihazlar ve Sağlık Hizmetleri Ltd. Şti.**

Çubuklu Mah. Boğaziçi Cad., Boğaziçi Plaza No: 6/1, Kavacık, TR-34805 Beykoz-İstanbul, Turkey  
Tel: +90 216 538 5900 Fax: +90 216 538 5919

**Cochlear (HK) Limited** Room 1204, 12/F, CRE Building, No 303 Hennessy Road, Wanchai, Hong Kong SAR  
Tel: +852 2530 5773 Fax: +852 2530 5183

**Cochlear Korea Ltd** 1st floor, Cheongwon building, 828-5, Yuksam dong, Kangnam gu, Seoul, Korea  
Tel: +82 2 533 4663 Fax: +82 2 533 8408

**Cochlear Medical Device (Beijing) Co., Ltd**

Unit 2208 Gerndale Tower B, 91 Jianguo Road, Chaoyang District, Beijing 100022, P.R. China  
Tel: +86 10 5909 7800 Fax: +86 10 5909 7900

**Cochlear Medical Device Company India Pvt. Ltd.**

Ground Floor, Platina Building, Plot No C-59, G-Block, Bandra Kurla Complex, Bandra (E), Mumbai – 400 051, India  
Tel: +91 22 6112 1111 Fax: +91 22 6112 1100

**株式会社日本コクレア (Nihon Cochlear Co Ltd)** 〒113-0033 東京都文京区本郷2-3-7 お茶の水元町ビル  
Tel: +81 3 3817 0241 Fax: +81 3 3817 0245

**Cochlear Middle East FZ-LLC**

Dubai Healthcare City, Al Razi Building 64, Block A, Ground Floor, Offices IR1 and IR2, Dubai, United Arab Emirates  
Tel: +971 4 818 4400 Fax: +971 4 361 8925

**Cochlear Latinoamérica S.A.**

International Business Park, Building 3835, Office 103, Panama Pacifico, Panama  
Tel: +507 830 6220 Fax: +507 830 6218

**Cochlear NZ Limited**

Level 4, Takapuna Towers, 19-21 Como St, Takapuna, Auckland 0622, New Zealand  
Tel: + 64 9 914 1983 Fax: +61 2 8002 2800

**www.cochlear.com**

ACE, Advance Off-Stylet, AOS, AutoNRT, Autosensitivity, Beam, Button, Carina, Cochlear, コクレア, Codacs, Contour, Contour Advance, Custom Sound, ESprit, Freedom, Hear now. And always, Hybrid, inHear, Invisible Hearing, MET, MP3000, myCochlear, NRT, Nucleus, 科利耳, Off-Stylet, SmartSound, Softip, SPrint, the elliptical logo and Whisper are either trademarks or registered trademarks of Cochlear Limited. Ardium, Baha, Baha Divino, Baha Intenso, Baha PureSound, Baha SoftWear, BCDrive, Dermalock, Vistafix and WindShield are either trademarks or registered trademarks of Cochlear Bone Anchored Solutions AB.

© Copyright Cochlear Limited 2015

*Hear now. And always*